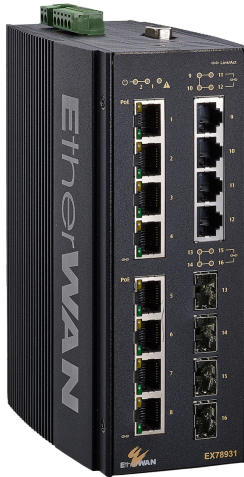


EX78900 系列

Lite L3 強固級網管型 16 埠 (8 x PoE) Gigabit 乙太網路交換器



產品介紹

This product is discontinued as of 30 Dec. 2024. [click here](#) for alternative product.

什麼是第三層交換器 (Layer 3 Switch) ?

EX789000系列強固級乙太網路交換器，具備16個Gigabit連接埠，可支援12個全Gigabit 網路埠，包含8埠 PoE及4個SFP插槽，PoE/PSE埠符合IEEE 802.3af/at供電標準，Ultra PoE 網路埠，每埠最高可支援60W，總供電瓦數為240W，可廣泛應用於許多終端受電(PD)設備，例如PTZ 球型攝影機、無線基地台及軌旁通訊設備等。

搭配益網獨家技術Alpha-Ring環狀網路備援機制，可在網路發生斷線時迅速啟動備援機制，在15毫秒內便可快速恢復連線通訊。具備完整管理功能，包含port security, IGMP snooping, port-based VLAN, GARP協定, link aggregation and ACL；使用者可透過網頁瀏覽, telnet, SSH, SNMP, RMON, TFTP和RS-232 console 管理介面，使複雜的專案規劃事半功倍。

EX78900系列專為嚴峻戶外環境設計打造，工業等級設計，可承受強力的落摔衝擊、防震動及抗電磁波干擾，在 -40 到 75°C 寬溫環境下穩定運作，於嚴峻的專案規劃佈局中扮演致勝的關鍵角色。

EtherWAN — "When Connectivity is Crucial."

產品亮點

+ 高頻寬彈性配置

8 或 12 個 10/100/1000BASE-T(X) 高速連接埠
多達 4 個 1G SFP+ 光纖上行鏈路連接埠
全雙工運行的全容量交換

+ 強固等級適用於不通風的惡劣環境

-40 至 75°C (-40 至 167°F)的寬工作溫度範圍
無風扇設計
高衝擊、耐熱和電氣干擾抵抗力

+ 第三層網管功能

靜態路由、RIP v1/v2, 和 OSPF
VRRP 虛擬路由器備援協定
廣播流量減輕

+ PoE 乙太網供電功能

IEEE 802.3bt 支援每埠最高60W, 總輸出功率達 240W
PoE 看門狗監控設備的連接狀態與自訂排程

+ 管理/安全功能

連接埠控制連接埠控制, SFTP 安全檔案傳輸協定
以 802.1x 連接埠基礎之網路登入控制以及透過
RADIUS的遠端身份驗證
使用 eVue™ 和 eLite™ 設定和監控

+ 服務支援

提供技術支援
免費韌體升級和通知
有限終身保固

產品特色

+ Interface

CLI, Telnet, Web GUI
SNMP v1/v2c/v3

+ Management

Firmware and configuration upgrade and backup via TFTP
DHCP Server/Client
RMON (Remote Monitoring): group 1, 2, 3, 9
Port Mirroring: TX/RX and both
NTP (Network Time Protocol) synchronization
IEEE 802.1ab LLDP (Link Layer Discovery Protocol)
IPv4/IPv6

+ Security

MAC Address Filtering
Enable/Disable port
Storm control (Broadcast and multicast types)
IEEE 802.1x LAN Access Control
Remote authentication through RADIUS and TACACS+
SSH for CLI and Telnet security
SSL for web security
System log (Remote/Local)
ACL

+ Quality of Service (QoS)

Priority Queues: 4 queues per port
Traffic classification based on IEEE 802.1p CoS, DSCP, WRR and strict mode
Rate Limiting (Ingress/Egress)

+ Layer 2 Features

Auto-negotiation for port speed and duplex mode

Flow Control
IEEE 802.3x Full duplex mode
Back-Pressure half duplex mode

Redundant Protocols

IEEE 802.1D STP
IEEE 802.1w RSTP
IEEE 802.1s MSTP
EtherWAN's Alpha-Ring network fault recovery (<15ms)

VLANs

IEEE 802.1Q Tag VLANs
GVRP
GMRP

Link Aggregation

Static Trunk (4 groups, support MAC base)
IEEE 802.3ad LACP

IGMP Snooping v1/v2/v3

+ Layer 3 Features

IP Packet Routing

Maximum number of routes in hardware: 64 entries
Static Routing
RIP v1/v2
OSPF v2

Routing Redundancy

VRRP

產品規格

+ Interface

Ethernet

8 or 12 (8 PoE) x 10/100/1000BASE-T(X)
4 x 1000BASE SX/LX/SFP

Console

1 x DB9 RS-232

Alarm Contact

1 x Relay output, current capacity 0.5A/48VDC

LED Indicators

Per Unit: Power 1, Power 2

Per Port: Link/Activity (Green)

Per PoE Port: PoE Status (Orange)

+ Physical

Casing Material

Aluminum

IP Rating

IP30

Dimensions

72 x 140 x 170mm (W x D x H)
2.8" x 5.5" x 6.7"

Weight

1.5kg (3.3lbs)

Installation Type

DIN-rail mounting

+ Technology

Standards

IEEE 802.3 10BASE-T
IEEE 802.3u 100BASE-TX/100BASE-FX
IEEE 802.3ab 1000BASE-T
IEEE 802.3z 1000BASE-SX/1000BASE-LX
IEEE 802.3x Full duplex and flow control
IEEE 802.1p QoS
IEEE 802.1Q Tag VLANs
IEEE 802.1w RSTP
IEEE 802.1x PNAC
IEEE 802.3af/at Power over Ethernet

Forward/Filtering Rate

14,880pps for 10Mbps
148,810pps for 100Mbps
1,488,100pps for 1000Mbps

Packet Buffer Memory

12M bits

Processing Type

Store-and-Forward
Auto-negotiation
Half-duplex back-pressure and IEEE 802.3x Full-duplex flow control
Auto MDI/MDIX

Jumbo Frame

9216 bytes

Address Table Size

16K MAC Addresses

+ Environmental

Operating Temp.

-40 to 75°C (-40 to 167°F)
Tested @ -40 to 85°C (-40 to 185°F)

Storage Temp.

-45 to 85°C (-49 to 185°F)

Relative Humidity

5% to 95% (non-condensing)

+ Regulatory

ISO

Manufactured in ISO-9001 facility

EMI

FCC Part 15B Class A
VCCI Class A
EN 61000-6-4
EN 61000-3-2
EN 61000-3-3

EMS

EN 61000-6-2
EN 61000-4-2 (ESD)
EN 61000-4-3 (Radiated RFI)
EN 61000-4-4 (Burst)
EN 61000-4-5 (Surge)
EN 61000-4-6 (Induced RFI)
EN 61000-4-8 (Magnetic Field)

Vibration

IEC 60068-2-6 Fc

Shock

IEC 60068-2-27 Ea

Free Fall

FED STD 101C Method 5007.1

+ Power

Input

52-57VDC Redundant (Terminal block)

Power Consumption

20W Max (without PoE)

PoE Technology

Alternative A & B

Pins 1/2(+), 3/6(-), Pins 7/8(-), 4/5(+)

PoE Power Output

PoE can be configured as:

1. 6-port 15.4W PoE and 2-port 60W PoE
2. 8-port 30W PoE
3. 4-port 10/100/1000-TX and 4-port 60W PoE
4. Other PoE power level configuration can be done through firmware

Power Budget: 240W

Protection

Reverse Polarity Protection

+ Warranty

Length

Limited Lifetime

Details

www.etherwan.com/support/warranty-policy

+ What's Included

Device

Ethernet Switch

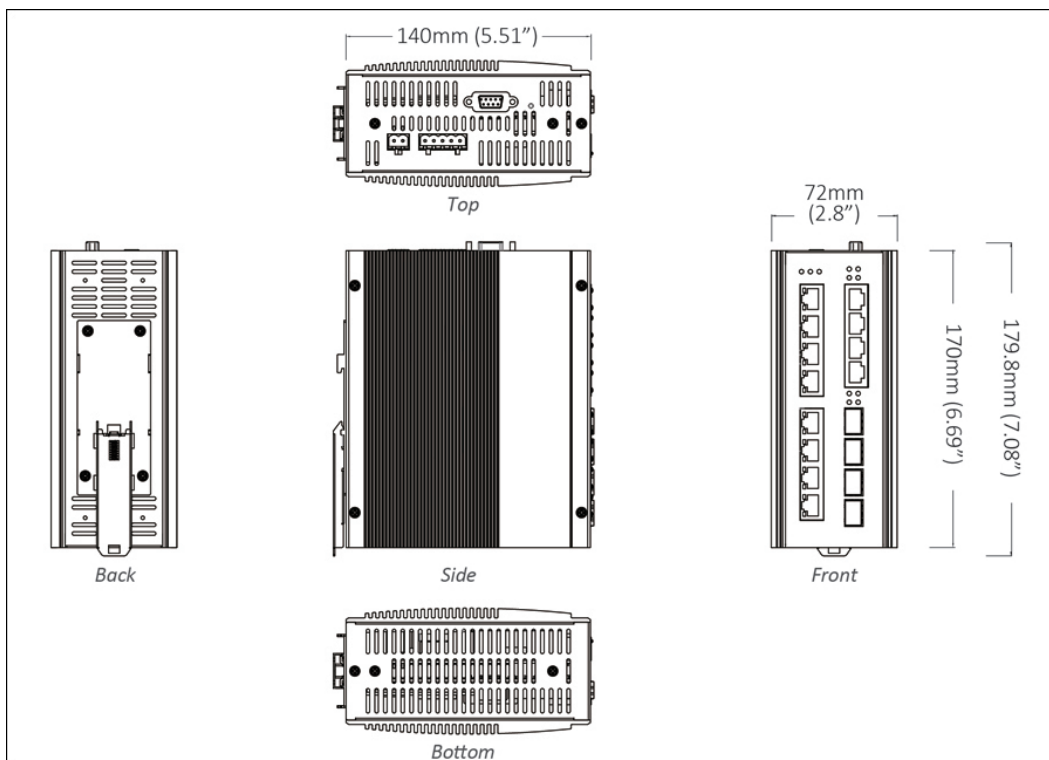
Cables

1 Console Cable

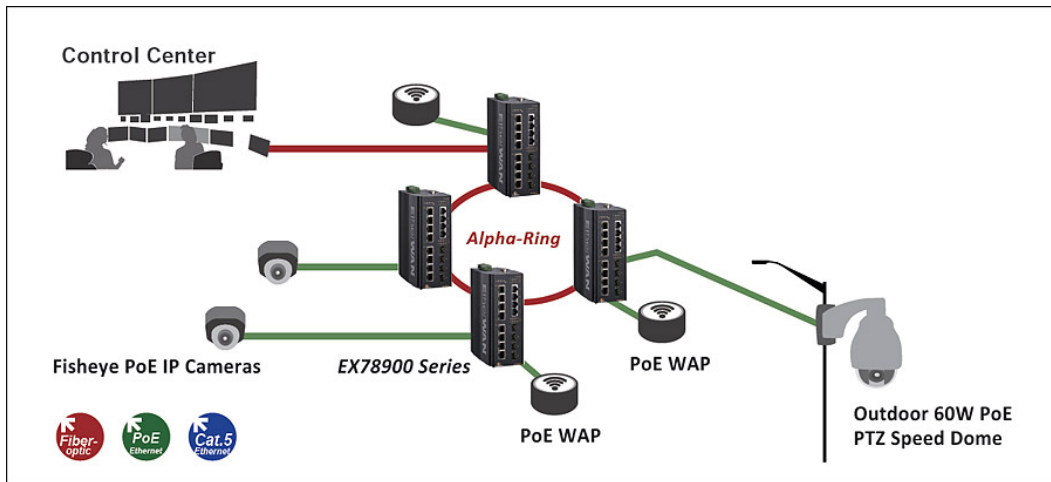
Documentation

Quick Install Guide

產品尺寸圖



產品應用圖



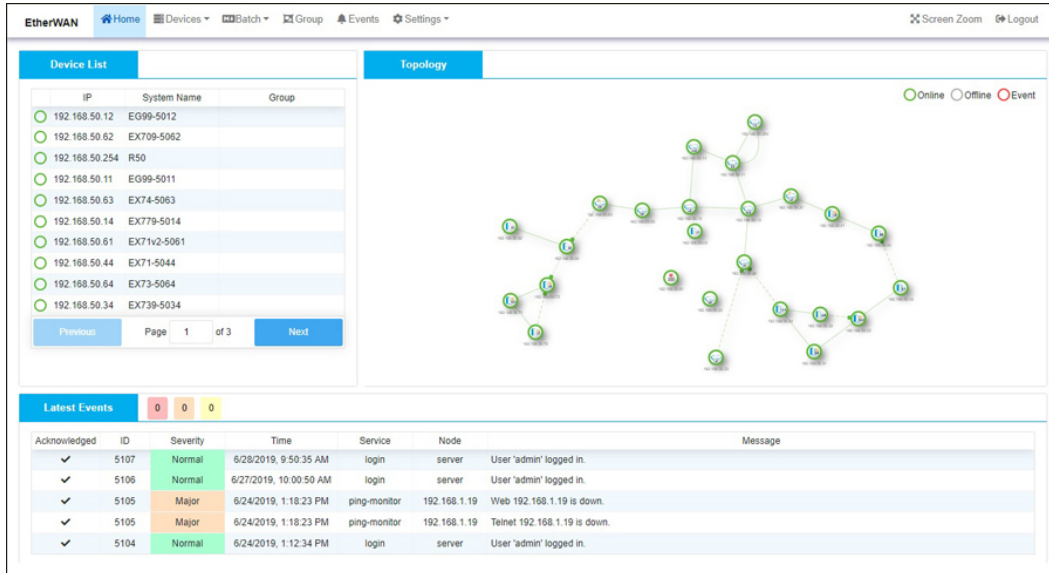
管理軟體

Network Management

[eVue™ Network Configuration and Monitoring Tool](#)

Network Discovery

[eLite™ Network Discovery and IP Configuration Tool](#)



Device List

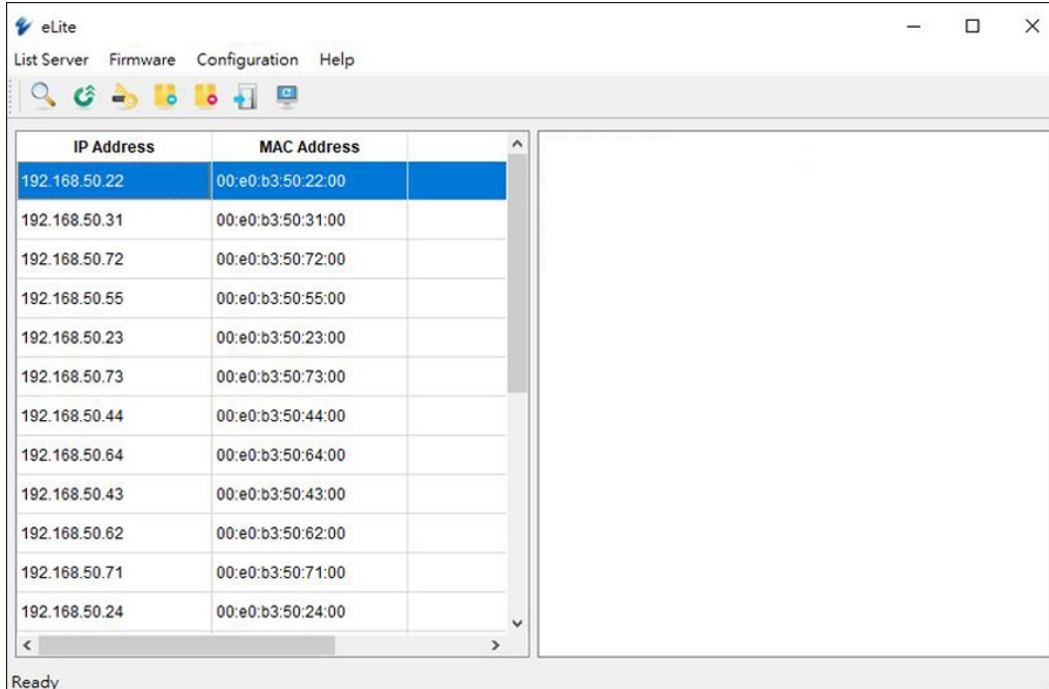
IP	System Name	Group
192.168.50.12	EG99-5012	
192.168.50.62	EX709-5062	
192.168.50.254	R50	
192.168.50.11	EG99-5011	
192.168.50.63	EX74-5063	
192.168.50.14	EX779-5014	
192.168.50.61	EX71v2-5061	
192.168.50.44	EX71-5044	
192.168.50.64	EX73-5064	
192.168.50.34	EX739-5034	

Topology

Legend: ● Online ○ Offline ○ Event

Latest Events

Acknowledged	ID	Severity	Time	Service	Node	Message
✓	5107	Normal	6/28/2019, 9:50:35 AM	login	server	User 'admin' logged in.
✓	5106	Normal	6/27/2019, 10:00:50 AM	login	server	User 'admin' logged in.
✓	5105	Major	6/24/2019, 1:18:23 PM	ping-monitor	192.168.1.19	Web 192.168.1.19 is down.
✓	5105	Major	6/24/2019, 1:18:23 PM	ping-monitor	192.168.1.19	Teinet 192.168.1.19 is down.
✓	5104	Normal	6/24/2019, 1:12:34 PM	login	server	User 'admin' logged in.



eLite

List Server Firmware Configuration Help

IP Address	MAC Address
192.168.50.22	00:e0:b3:50:22:00
192.168.50.31	00:e0:b3:50:31:00
192.168.50.72	00:e0:b3:50:72:00
192.168.50.55	00:e0:b3:50:55:00
192.168.50.23	00:e0:b3:50:23:00
192.168.50.73	00:e0:b3:50:73:00
192.168.50.44	00:e0:b3:50:44:00
192.168.50.64	00:e0:b3:50:64:00
192.168.50.43	00:e0:b3:50:43:00
192.168.50.62	00:e0:b3:50:62:00
192.168.50.71	00:e0:b3:50:71:00
192.168.50.24	00:e0:b3:50:24:00

Ready

訂購型號

+ Model

EX78931-0VB	12-Port 10/100/1000BASE-TX with 8-port PoE + 4-port Gigabit SFP
EX78921-0VB	8-Port 10/100/1000BASE-TX PoE + 4-Port Gigabit SFP
EX78921-0XB	8-Port 10/100/1000BASE-TX PoE + 4-Port Gigabit Fiber

* DIN-Rail mounting kit included.

+ Gigabit Port Options (X)

3	1000BASE-SX (SC) - 550m
4	1000BASE-SX (SC) - 2Km
5	1000BASE-SX (ST) - 550m
A	1000BASE-LX (SC) - 10Km
B	1000BASE-LX (SC) - 20Km
R	1000BASE-BX (SC) WDM-TX: 1310nm/RX: 1550nm-20Km
S	1000BASE-BX (SC) WDM-TX: 1550nm/RX: 1310nm-20Km

* More Gigabit options also available upon request.

+ Accessories

Hardened Gigabit SFP Modules	www.etherwan.com/products/sfp-fiber-transceiver
DIN-Rail Power Supplies	www.etherwan.com/products/din-rail-power-supply (*)
*Recommended Power Supply	HDR-30-24 30W 24VDC DIN-Rail Power Supply
EB-232	Configuration Backup and Restoration Tool

