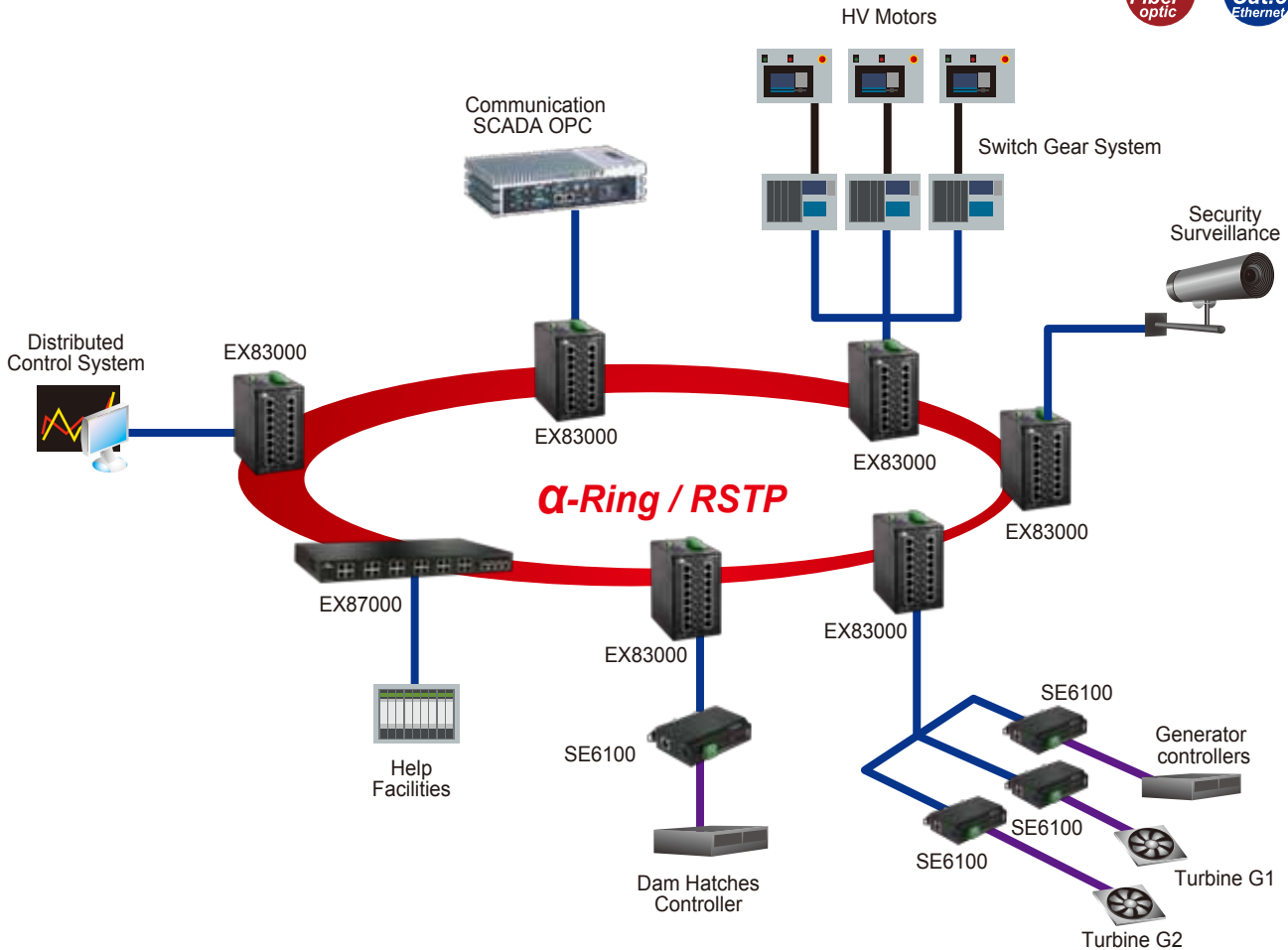


Hydro Power



Hydro Power Solutions deliver an unparalleled range of high return options for the long-term flexibility and reliability of hydropower assets. EtherWAN's EX83000 series DIN rail mount model with 16 10/100BASE and 2 Gigabit Ethernet can be used as a connectivity solution for HV Motors, Dam Hatches Controller, distributed control systems and Turbines.



EX83000

IEC61850/IEEE1613 Managed Hardened 16-port 10/100BASE with 2-port Gigabit combo Ethernet Switch

- Provides flexibility of 16-port 10/100BASE-TX/FX/BX plus 2-port 1000BASE-SX/LX/BX combo
- Complies with IEC61850-3 & IEEE1613 Environmental requirements for power substation and energy related automation systems
- Supports α-ring and RSTP/MSTP/STP for Ethernet redundancy
- -40°C to 75°C (-40°F to 167°F) operating temperature range



SE6100

Hardened 1-port Serial Device Server

- Best hardened model for serial to Ethernet data transmission with various communication modes
- Serial interface with isolation protection is available
- Supports RS-232/422/485 serial communication
- Wide operation temperature specification supports harsh environment applications

