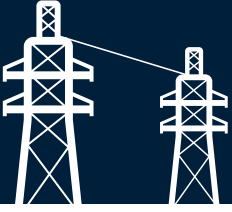
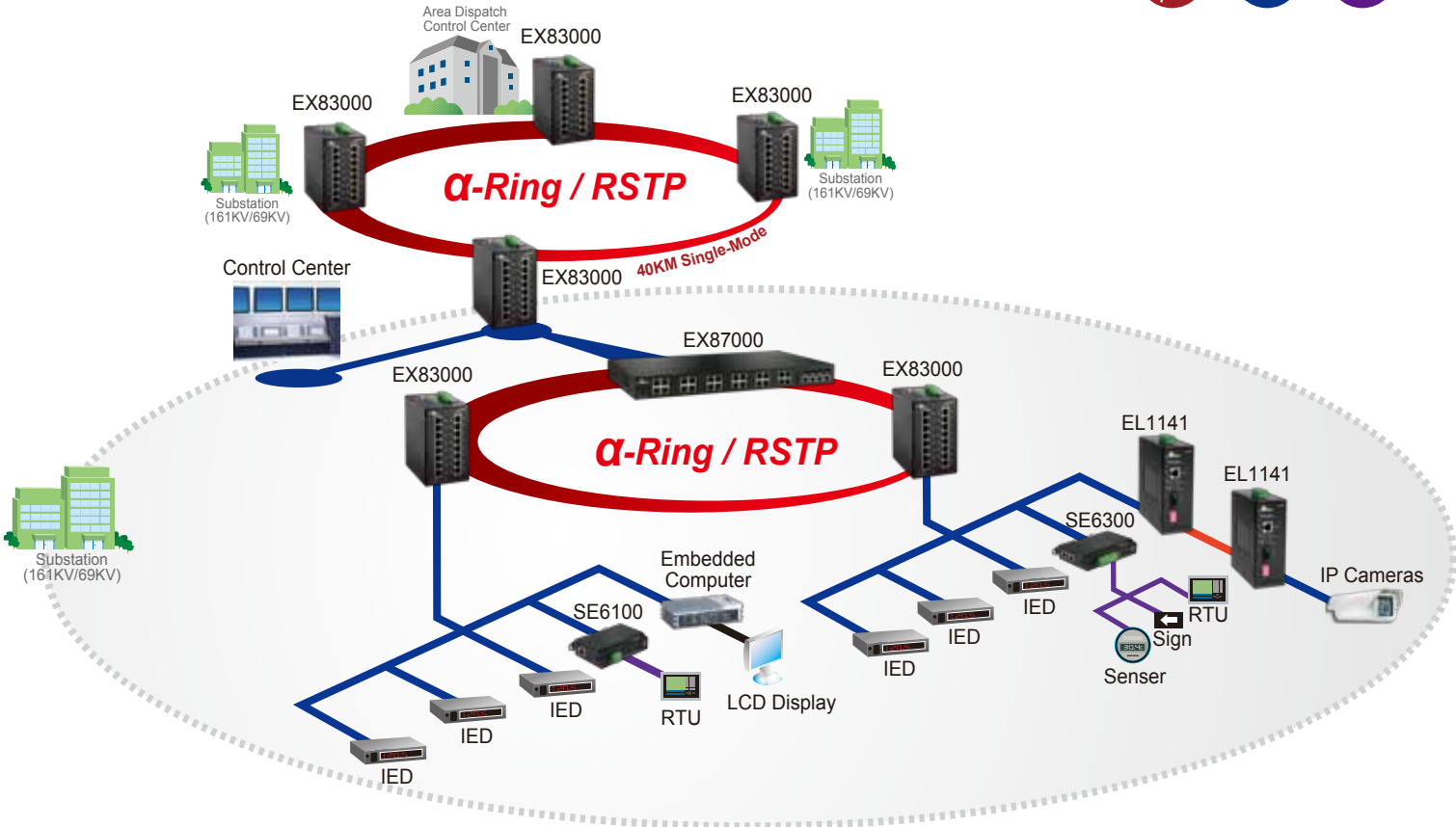


Power Substation



EtherWAN's EX87000 Hardened Managed Ethernet Switch, tested and approved by KEMA, connected to EtherWAN's new EX83000 series, DIN rail mount model with up to 16 10/100BASE and 2 Gigabit Ethernet Switch, provide a high level of immunity to electromagnetic interference (EMI) to be placed in mission-critical power substation application zone.



EX87000

IEC61850/IEEE1613 Managed Hardened 24-port 10/100BASE and 4-port Gigabit Ethernet Switch with SFP options

- Provides flexibility of 24-port 10/100BASE-TX/FX/BX/SFP plus 4-port 1000BASE-TX/SX/LX/BX/SFP (EX83000 for DIN-Rail 16-port option)
- Complies with IEC61850-3 & IEEE1613 Environmental requirements for power substation automation systems (Tested by KEMA)
- Supports α -ring and RSTP/MSTP/STP for Ethernet redundancy
- -40°C to 75°C (-40°F to 167°F) operating temperature range



EL1141

IEC61850/IEEE1613 Hardened 10/100BASE-TX to 100BASE-FX Media Converter

- Specific design for power automation applications with IEC61850-3, IEEE1613 standard compliances
- Specific design for industrial communication applications with UL508 safety certification, focus on various Industrial communication applications
- Supports DIN-Rail, Panel or Rack Mounting installation
- -40°C to 75°C (-40°F to 167°F) operating temperature range

